

Repair and rebuild anything made of concrete

# InstaCrete®

CONCRETE REPAIR EPOXY PUTTY STICK

## Patch...

- Floors
- Curbs
- Steps
- Mortar
- Brick re-pointing
- Chipped concrete

## Repair...

- Tile
- Statues
- Lawn ornaments
- Birdbaths
- Cemetery headstones
- Cracks and seams

## Anchor...

- Bolts, screws
- Nails
- Railings
- Legs

## Seal...

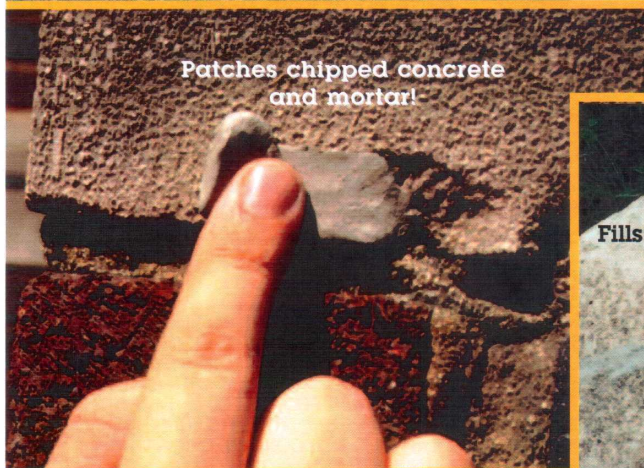
- Basement leaks
- Tie rod holes



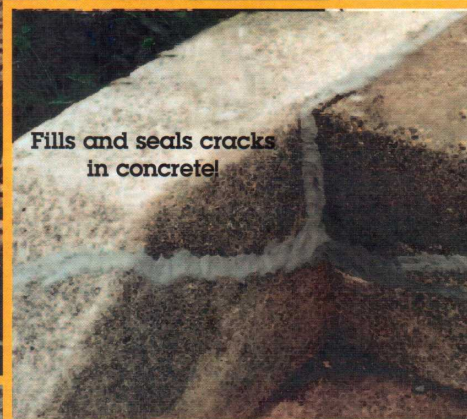
- The ultimate solution for small or emergency repairs
- Easy-to-use and mistake-proof
- Bonds instantly with superior strength
- Saves hundreds of dollars in repairs
- Belongs in every toolbox



Rebuilds birdbaths, lawn ornaments and statues!



Patches chipped concrete and mortar!



Fills and seals cracks in concrete!

Made in U.S.A.





**4**  
MINUTE  
WORK  
LIFE

# InstaCrete Concrete Repair Epoxy Putty Stick

## Product Description

InstaCrete is a hand-mixable, fast-setting epoxy putty that quickly repairs concrete and masonry. It also bonds to metals, wood, glass, and many plastics. After mixing, it forms a concrete repair polymer that cures to a concrete-like color and texture. Each handy stick contains pre-measured portions of activator and base throughout — no measuring or mixing tools are necessary. The consistency (like modeling clay) eliminates drips and runs, facilitates adhesion to the substrate, and allows the material to be shaped and formed as needed before curing begins. After 60 minutes the application can be drilled, sawed, filed, tapped, and painted. Suitable for interior or exterior use, it is resistant to water, chemicals, and temperature extremes. InstaCrete contains no solvents or VOCs. It's non-flammable and releases no noxious fumes. It won't shrink or pull away. The unused portion stays fresh for future use when saved in its original package.

## Performance Data\*

|   |                                      |
|---|--------------------------------------|
| <b>SHELF LIFE AT 75°F (24°C)</b>  | <b>24 months minimum</b>             |
| <b>SHORE D HARDNESS AT FULL CURE (24 hrs)</b>   | <b>80</b>                            |
| <b>LAP SHEAR TENSILE STRENGTH</b>   |                                      |
| On steel (1" x 1" x 1/16")  | <b>700 lbs (4.8 MPa)</b>             |
| On concrete   | <b>Concrete failure</b>              |
| <b>COMPRESSIVE STRENGTH</b>   | <b>8,000 psi (55 MPa)</b>            |
| <b>SHRINKAGE</b>  | <b>&lt;1%</b>                        |
| <b>NON-VOLATILE CONTENT</b>   | <b>100%</b>                          |
| <b>DIELECTRIC STRENGTH</b>  | <b>300 volts/mil</b>                 |
| <b>TEMPERATURE LIMITS</b>   |                                      |
| Continuous  | <b>-40° to 250°F (-40° to 121°C)</b> |
| Intermittent  | <b>-40° to 300°F (-40° to 149°C)</b> |
| <b>CHEMICAL RESISTANCE</b>  |                                      |
| Resistant to hydrocarbons, ketones, alcohols, esters, halocarbons, aqueous salt solutions and dilute acids and bases. |                                      |

## NOT INTENDED FOR STRUCTURAL APPLICATIONS

\*Not to be used for specification purposes.

## Availability

InstaCrete is one in a family of Specialty Epoxy Putties originated and manufactured by Polymeric Systems, Inc. Also look for FastSteel®, QuikAluminum®, QuikCopper®, AquaMend®, QuikPlastik®, QuikWood®, RepairItQuik®, and QuikTitanium®. Our epoxy putties give you the ability to fix just about anything.



## Packaging Options

InstaCrete is available in 3.5" (2 oz) and 7" (4 oz) lengths, individually packaged in a reusable clear plastic tube with trilingual (English, Spanish, French) instructions and plastic friction top. The display carton holds 12 or 24 - 3.5" sticks or 12 - 7" sticks (packed 2 display cartons per master carton), or bulk-packed 24 sticks per shipper carton. Display cartons are also sold separately for refillable, point-of-purchase display. 3.5" sticks are also available in blister packs (12 per carton); printer minimum applies. Contact Sales for acrylic display rack supplier information.



Pop-Up Cardboard Display Carton



Blister Packs



Acrylic Display Racks

## How To Use

Before applying, roughen and clean the area to be repaired. Wear impervious gloves when mixing or handling uncured InstaCrete. Then follow these easy steps.



- 1. Cut** or twist off required amount.
- 2. Mix** by kneading with gloved fingers to a uniform color. If mixing is difficult, warm InstaCrete to room temperature or slightly above.
- 3. Apply** to surface to be repaired within 2 minutes of mixing. Force into any cracks or holes and strike off excess material, preferably with a tool moistened with clean water.

Mixed Color  
CONCRETE  
GREY

When applying to a damp, wet or slowly leaking area, work the mixed material forcefully into the surface and apply pressure until adhesion begins to take effect.

**For best results:** Use damp fingers for easier mixing, application, and smooth appearance of the cured compound. Remove excess material before hardening begins.

**Curing:** InstaCrete has a 4- to 7-minute work life. Functional cure occurs within 60 minutes.

**WARNING** • Contains Epoxy Resin and Tri (dimethylaminomethyl) phenol. Skin and eye irritant/sensitizer. Direct product contact may cause allergic reaction in some individuals. Wear impervious gloves when mixing or handling uncured product. Avoid contact with eyes. • Inhalation of dust may be harmful; wear dust mask and protective eyewear when sanding cured product. • Ingestion of product may be harmful. • KEEP OUT OF REACH OF CHILDREN. • See product insert or MSDS for additional information.

Polymeric Systems, Inc., is a part of Whitford Worldwide. For more information, please contact Polymeric Systems or Whitford Ltd. at:

Polymeric Systems, Inc.  
47 Park Avenue  
Elverson, PA 19520  
888-EPOXY FIX (888-376-9934)  
Tel: +1 (610) 286-2500  
Email: sales@polymericsystems.com  
Website: polymericsystems.com

In the EU contact:  
Whitford Ltd.  
11 Stuart Road, Manor Park  
Runcorn, Cheshire, UK WA7 1TH  
Tel: +44 (0) 1928 571000  
Email: salesuk@whitfordww.com  
Website: whitfordww.com



## Metal Aid Engineers

G-2, "Jains Brindavan" 38, Brindavan Street, West Mambalam, Chennai 600 033.  
Tel. 2371 1946 / 2471 8292 Fax : 2370 1225 Cell : 94443 51612  
E-mail : metalaidengg@rediffmail.com